

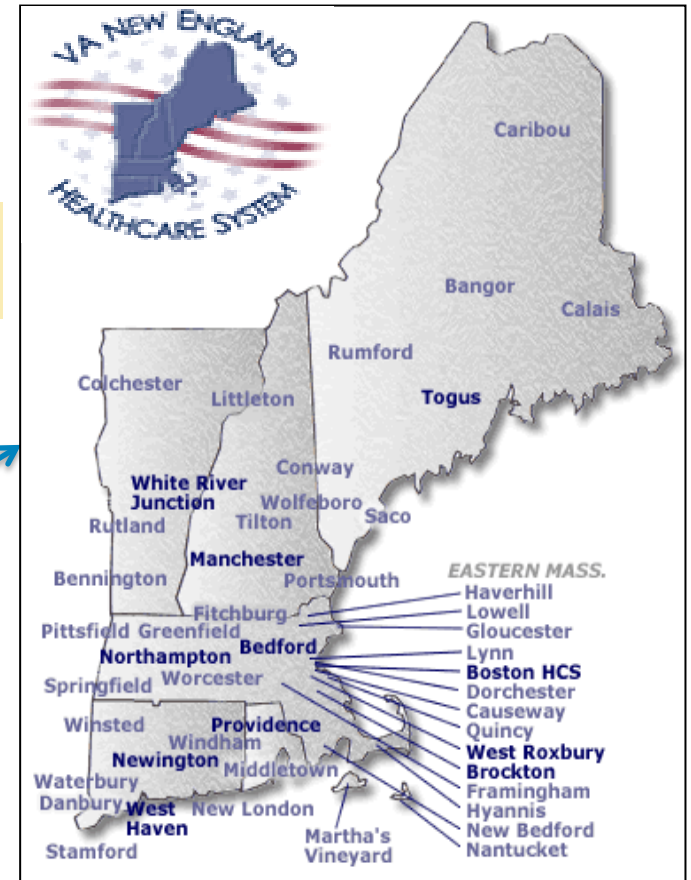
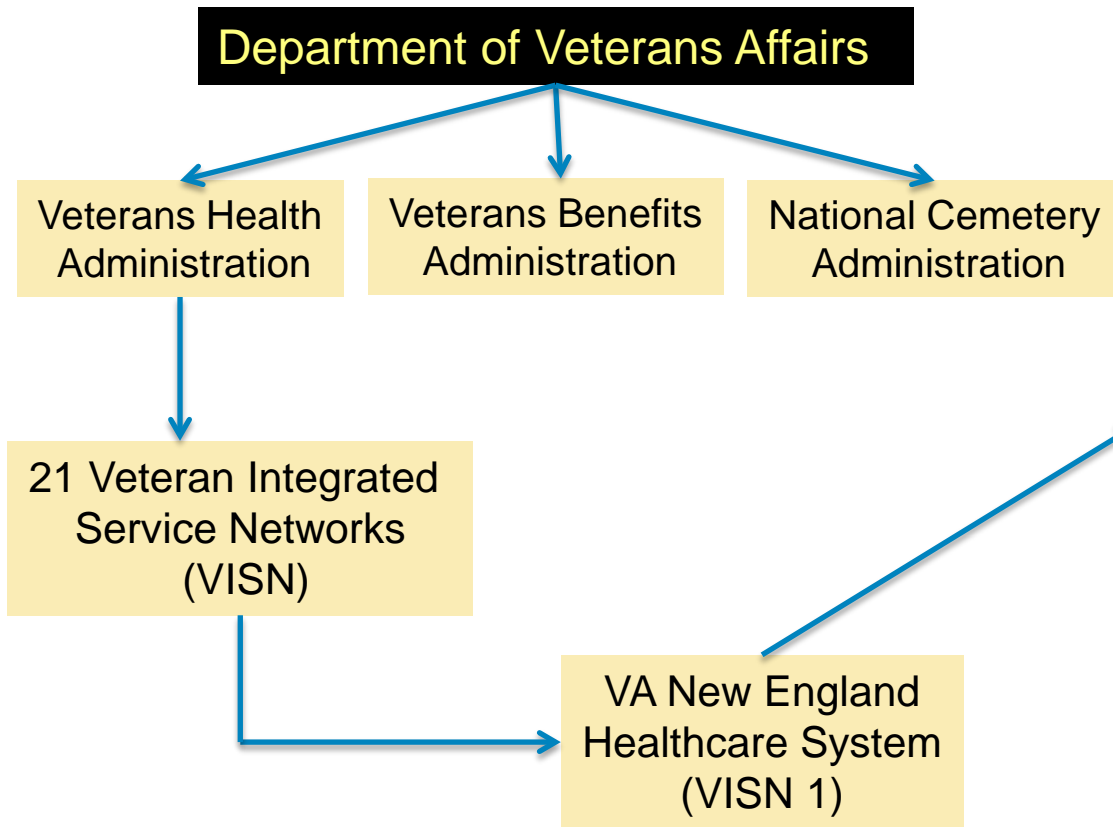


White River Junction VA Medical Center (WRJ VAMC)



VA Defining
HEALTH **EXCELLENCE**
CARE in the 21st Century

VA Organizational Structure



White River Junction VA Vision



A patient centered integrated health care organization for Veterans providing excellence in health care, research, and education; an organization where people choose to work; an active community partner and back-up for National emergencies

A Short History of WRJ VAMC

- **Chosen as a Central location to serve both Vermont & New Hampshire Vets**
 - 176 acres donated by the town Hartford
 - Construction of bldg. #1 started 4/6/37
 - 1st Patient seen October 17, 1938
- **1939 - buildings 8, 9, 10, & 4 erected**
 - Two patient wards added: 188 bed tot.
 - Nursing and attendants quarters
- **At the end of WWII, 26 Quonset huts were erected on bldg. 44 location**
 - Bed capacity increases from 188 to 250 tot.
- **1946 - the WRJ VAMC becomes a teaching hospital affiliated with DMS**
- **1974 – building 31 is constructed as a new 204 bed replacement hospital**
- **1977 – 1991 – 57.6M invested in facilities**



White River Junction VA Medical Center

- Opened October 17, 1938
- Level 2 Acute Care Facility
- 74 bed capacity
 - 43 bed Med/Surg capacity
 - 7 bed ICU
 - 10 bed Locked, Inpatient Mental Health Ward
 - 14 bed Residential Recovery Center
- Existing Gross Square Feet – 501,982
- 7 Community Based Outpatient Clinics
 - 5 in Vermont and 2 in New Hampshire
 - 5,325 TeleHealth encounters FY16
- Affiliations with over 40 Academic Institutions



Overview of Veterans Health Administration Regional Perspective

- **Treat approximately 26,342 unique Veterans a year [FY17]**
 - 17,500 from Vermont
 - 8,000 from New Hampshire
 - 3,000 Post 9-11
- **Approximately 72,250 total Veterans in catchment area**
 - 49,900 in Vermont
 - 22,350 in New Hampshire
- **298,815 outpatient encounters in FY2017**
- **Annual Budget \approx \$225 million [FY2017]**



Access to Care: Improving Geographic Access

- Expanding hours of access
- Adding sites of care in local communities
- Expanding Telehealth Program to improve access to Specialty Care
- Evolving our Veterans Transportation Program [Video on coming slide]
- Increasing use of the Veterans Choice Program

Access to Care Community Based Outpatient Clinics: Vermont Locations



Brattleboro

Burlington



Rutland



Newport

Bennington



Access to Care

Community Based Outpatient Clinics: New Hampshire Locations



Littleton



Keene

Access to Care: Timeliness

White River Junction VA Access: (As of November 30, 2017)

- 19,258 scheduled appointments
- 94.53% scheduled completed within 30 days

Average Wait Times [from preferred date]:

Primary Care

Specialty Care

Mental Health

5.79 days

9.21 days

0.84 days

National Averages:

4.28 days

6.98 days

3.02 days

Publically Accessible Access Information:

<http://www.va.gov/health/access-audit.asp>

Affiliations

Medical School Affiliations:

- *Geisel School of Medicine (formerly Dartmouth Medical School): 4th oldest medical school in nation.*
- *University of Vermont (UVM) College of Medicine*

Nursing Affiliations with the following schools:

- *Colby Sawyer, University of Vermont, University of New Hampshire, Norwich University, New Hampshire Technical College, Hartford (VT) Area Career Technology Center, Vermont Nursing Alliance, Vermont Technical College (VTC), Russell Sage College, SUNY, St. John's Newfoundland*

Other Active Affiliations:

- *Smith College, New Hampshire Technical College, New Hampshire Technical Institute, New England College of Optometry, Illinois College of Optometry, Colby Sawyer, Lebanon College, University of Wyoming, Indiana State University, University of South Carolina, Springfield College, Essex Technical Center, Windsor High School*

Vet Centers

- Vet Centers serve Veterans and their families by providing a continuum of quality care that adds value for Veterans, families, and communities. Care includes professional readjustment counseling, community education, outreach to special populations, the brokering of services with community agencies, and provides a key access link between Veterans and other services in the U.S. Department of Veterans Affairs.
- We provide support to four Vet Centers located in White River Junction and South Burlington, Vermont; and Berlin and Keene, New Hampshire.
- Suite 100
118 Prospect St.
White River Junction, VT 05001
Mark Roberts (acting)
Phone:(802)295-2908
- 359 Dorset St.
South Burlington, VT 05403
Marie C. Milord
Phone:(802)-862-1806
- 515 Main St.
Gorham, NH 03581
Jay Sprinkle
Phone:(603)-752-2571
- 640 Marlboro St.
Keene, NH
David Cope
Phone:(802)-358-4950

Veteran Service Organizations

At White River Junction VAMC, full time service officers staff the offices of the American Legion, Veterans of Foreign Wars, and Disabled American Veterans. Further information may be obtained by contacting the following:

- (802) 296-5166 - American Legion
- (802) 296-5168 - Veterans of Foreign Wars
- (802) 296-5167 - Disabled American Veterans

The Veterans Transportation Service (VTS) and Disabled American Veterans (DAV) Transportation Program provides transportation for Veterans who are ineligible for VA travel. Veterans in need of transportation should contact the DAV travel office at 802-296-9363, ext. x4381 and x5394.

<https://www.youtube.com/watch?v=TVDuH1i4XcU>

Congressional Offices of Vermont & New Hampshire

Our elected officials in the Senate and Congress are our stakeholders and we foster very good working relations with our national Congressional Offices.

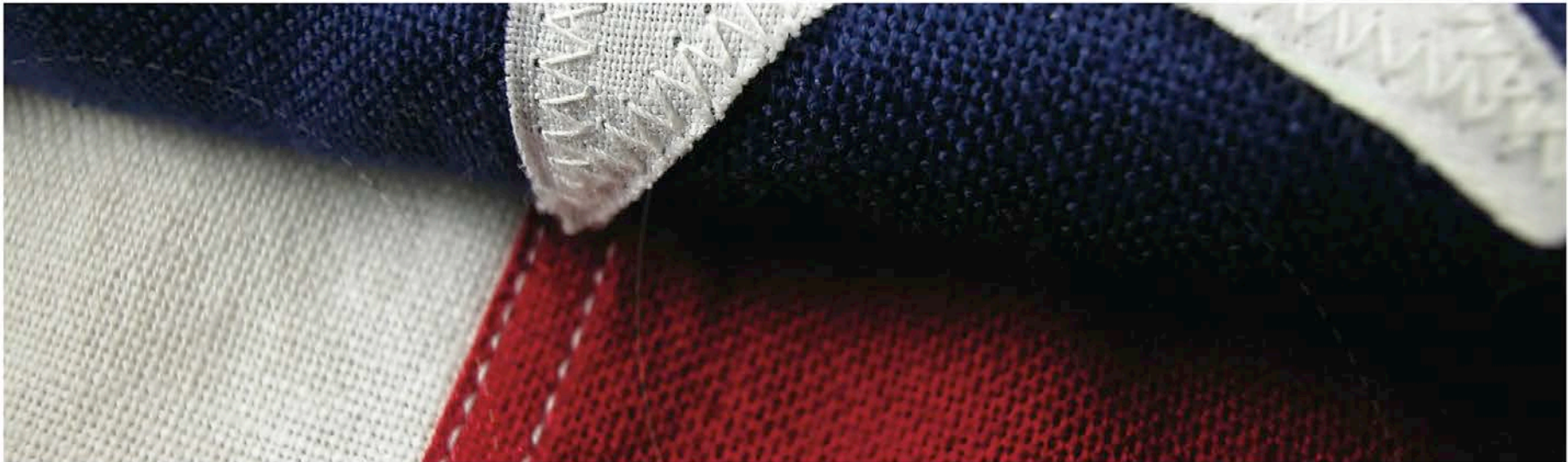
Vermont Delegation

- *Senator Patrick Leahy (D)*
- *Senator Bernard Sanders (I)*
- *Representative Peter Welch (D)*

New Hampshire Delegation

- *Senator Jeanne Shaheen (D)*
- *Senator Margaret Hassan (R)*
- *Representative Anne McLane-Kuster (D)*





Questions?



VA Defining
HEALTH CARE **EXCELLENCE**
in the 21st Century